



KONICA MINOLTA

SPECTROPHOTOMETER CM-2600d

Portable, Compact, Easy to Use
Performs Like a Desktop Spectrophotometer
World's first portable spectrophotometer equipped with automatic
UV adjustment function.
Advanced Numerical UV Control dramatically reduces evaluation time.



The essentials of imaging

The CM-2600d is a portable integrating sphere spectrophotometer designed for versatility in various applications.

Simultaneous measurement of SCI (specular component included) and SCE (specular component excluded). Advanced Numerical Gloss Control.

Simultaneous measurement of SCI and SCE displays data on the LCD in 1.5 seconds. Unlike conventional spectrophotometers, there is no need to switch between SCI and SCE mode. This improves working efficiency, and provides stable measured data since the measurement area does not shift when the mode is switched. And also Relativity Gloss Value can be displayed by using Numerical Gloss Control.



Relativity Gloss Value
The LCD specifications are subject to change without prior notice.

- SCI is a method in which measurements are taken with the specular reflection included. For this reason, it minimizes influences of the surface condition of a sample, and is especially suitable for color quality control and Computer Color Matching.
- SCE is a method in which measurements are taken excluding the specular reflection. For this reason, it provides measurement results similar to those observed by the human eye.



High reliability and long life. Maintenance-free design.

The number of moving parts used in the instrument is minimized through the introduction of numerical control technology. The CM-2600d can be used with confidence, since it has been developed, manufactured and calibrated to meet ISO 9001 requirements.

* World's first portable spectrophotometer equipped with instantaneous UV adjustment function. UV evaluation time has been reduced revolutionarily due to the introduction of advanced Numerical UV Control.

Light sources including and excluding UV component flash sequentially to provide sample data taken with UV-included energy as well as UV-excluded energy (UV400nm cutoff filter)



Example of data taken with UV-excluded energy



Example of data taken after UV adjustment

* Since the instrument has a built-in instantaneous

UV adjustment function, data can be easily taken using the desired light source (e.g. D65, D50, C). UV calibration can be performed simply by measuring a standard with known fluorescent values under the desired light source.

Once the UV calibration is completed, sample data can be taken by measuring the sample under the desired light source. Since the conventional UV adjustment that requires the UV cutoff filter to be moved is not necessary, measurement time can be reduced drastically.

(Note on UV-Adjustment : Numerical UV-calibration requires for the adjustment calculation SpectraMagic.)



Allows measurement in any position. Compact, lightweight with an easy-to-operate navigation wheel and large LCD display.

The battery-powered small, compact body allows the instrument to be placed in any position at the sample surface.

The large LCD reverse video display provides easy reading, irrespective of which hand it is held in.

Using your finger, the navigation wheel allows simple and user-friendly operation.

(Turn) (Push)



Measures the target with high accuracy. Easy-to-carry stylish body with an illuminated viewfinder.

The instrument is portable and it allows measurements to be taken using two different areas of view (ø8mm and ø3mm). The user can choose the most suitable measurement area for the target. The lightweight, easy-to-carry body with the illuminated viewfinder enables the user to position the instrument on the target quickly and accurately.

Promotes accurate color communication. Conforms to all widely accepted industry standards and allows measurements in all commonly used color spaces.

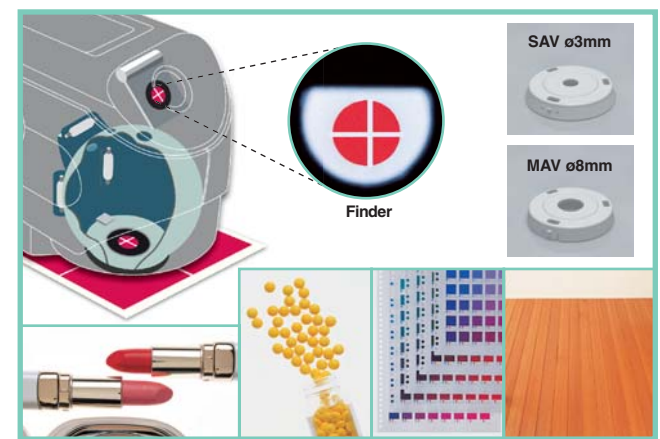
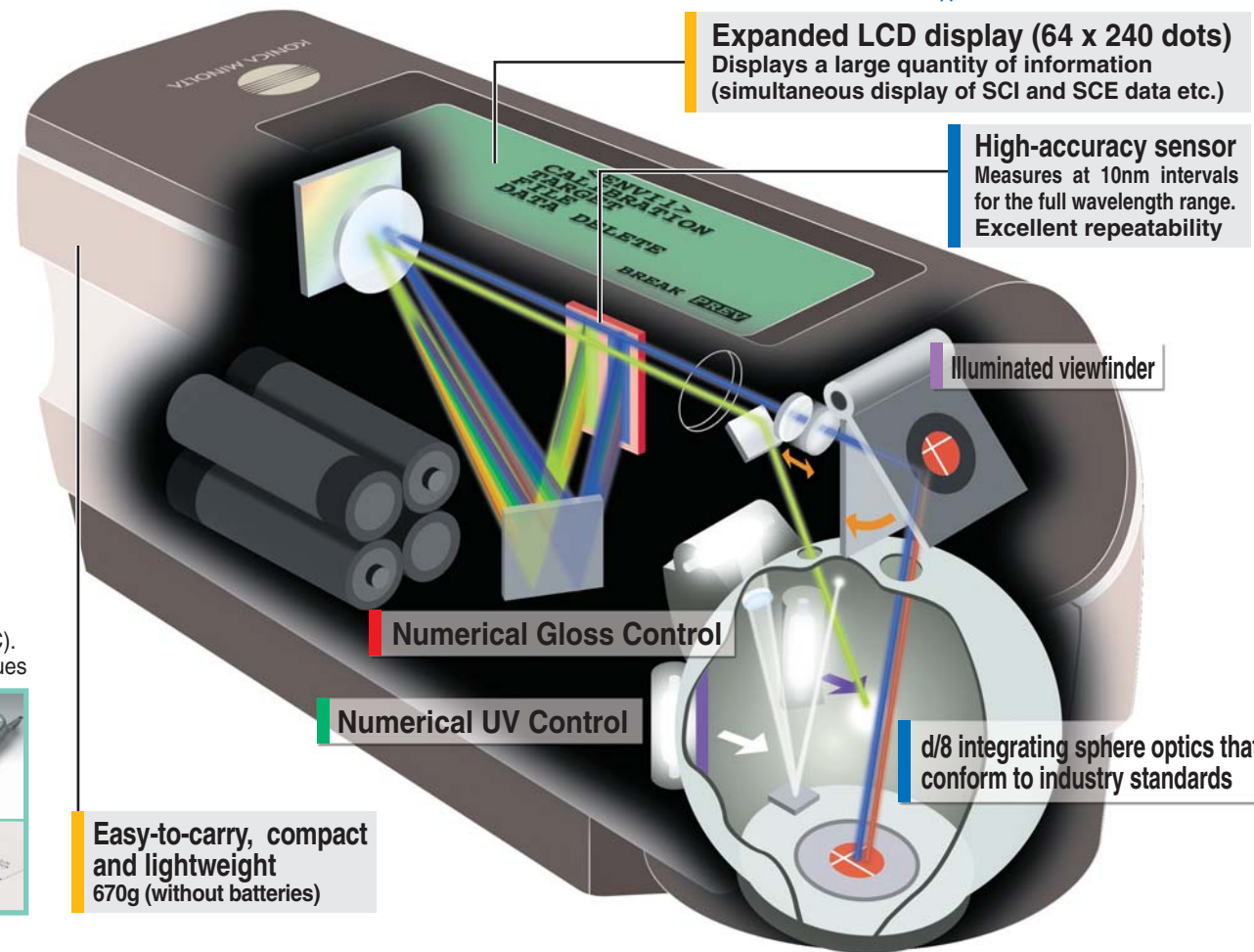
The optics use an integrating sphere to provide diffuse illumination/8-degree viewing system.

The CM-2600d conforms to all widely accepted industry standards including ISO, JIS, DIN, CIE and ASTM, and generates measurements in color spaces such as L*a*b*, Yxy, Munsell and CMC.



Expanded LCD display (64 x 240 dots) Displays a large quantity of information (simultaneous display of SCI and SCE data etc.)

High-accuracy sensor Measures at 10nm intervals for the full wavelength range. Excellent repeatability



Powerful partnership between CM-2600d and SpectraMagic

Color Quality Control Software

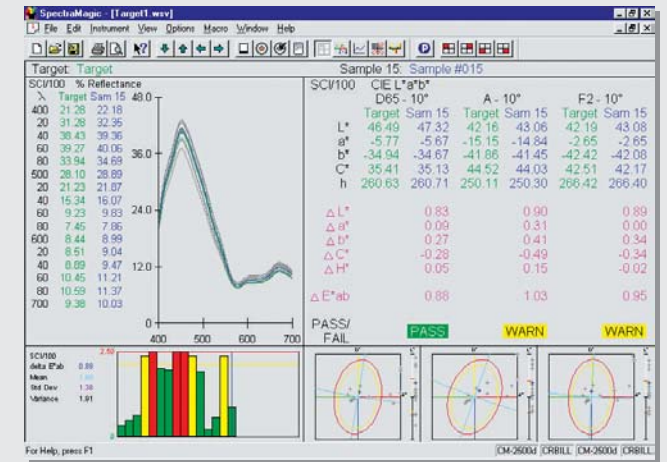
SpectraMagic (Optional)

Supports Windows®98/2000, Windows NT®4.0

Consistent color communication. Since automatic setting of color difference tolerances is possible, accurate Pass/Fail information can be given to customers and manufacturers.

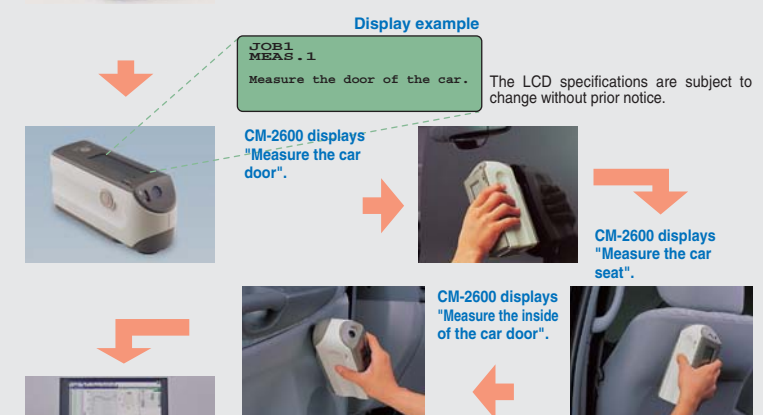
Enables color analysis from various viewpoints. Detailed, easy-to-see spectral graph.

Exports data to spreadsheet applications.



Procedures are displayed in the form of messages, to eliminate in-process mistakes. Task function by CM-2600d and SpectraMagic.

Measurement procedure can be downloaded to the CM-2600d from SpectraMagic. Since standard color difference for each part can be entered, human setting errors can be prevented.



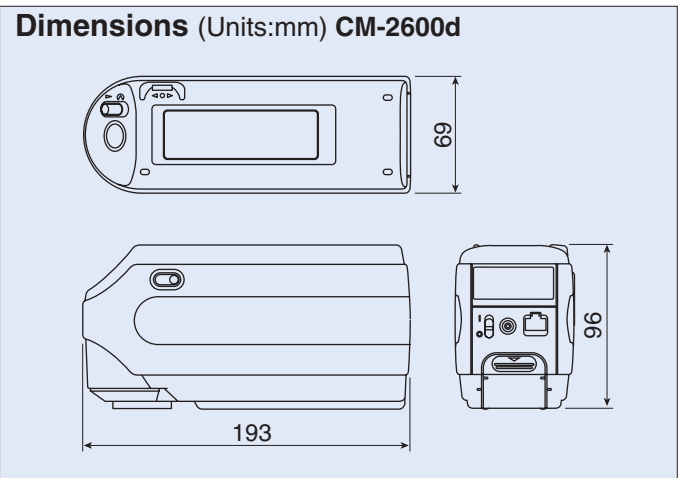
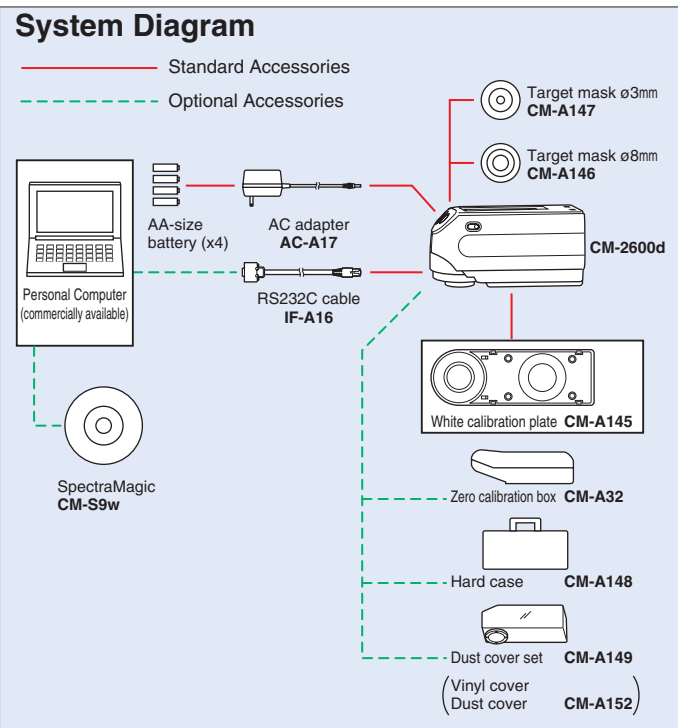
By connecting the CM-2600d to the computer via SpectraMagic, data can be downloaded for color quality control analysis.

<Main Specifications>

Color space / Color difference scales	L*a*b*, L*c*h, L*u*v*, Hunter Lab, FMC-2, CMC, CIE-94, XYZ, Yxy
Color indices	Metamerism, Whiteness/Whiteness Difference, Yellowness/Yellowness Difference, Tint/Tint Difference, Brightness, opacity, Haze, Dominant Wavelength, Excitation Purity, Ganz WI, Ganz Tint
Observer Conditions	2°, 10°
Illuminant Conditions	A, C, D65, D50, D55, D75, F2, F6, F7, F8, F10, F11, F12, U50
Displays	Spectral plot, Color plot, Tolerance plot, Statistical report, Real color, K/S, Multi-view display
Tolerance Settings	Elliptical, Box, Pass / Warn / Fail

Microsoft®, Windows®, Windows®2000, Windows®98, Windows NT® are trademarks of Microsoft Corporation in the USA.

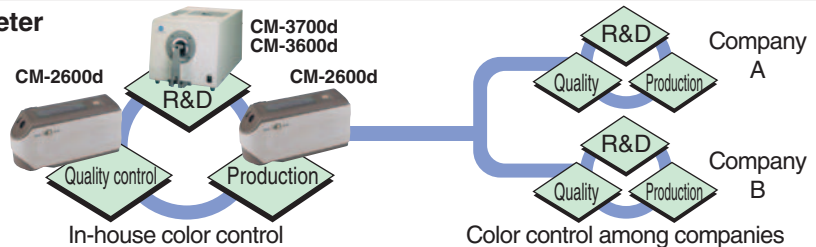
Specifications	
Illumination/ observation system	d/8 (diffuse illumination, 8-degree viewing), equipped with simultaneous measurement of SCI (specular component included)/SCE (specular component excluded) Conforms to CIE No.15,ISO 7724/1,ASTM E1164, DIN 5033 Teil7 and JIS Z8722 Condition C standard.
Sphere Size	ø52mm
Light-receiving element	Silicon photodiode array (dual 40 elements)
Spectral separation device	Diffraction grating
Wavelength range	360nm to 740nm
Wavelength pitch	10nm
Half bandwidth	Approx. 10nm
Reflectance range	0 to 175%, resolution: 0.01%
Light source	3 pulsed xenon lamps
Measurement time	Approx. 1.5 seconds (approx. 2 seconds for fluorescent measurement)
Minimum interval between measurements	3 seconds for SCI/SCE (4 seconds for fluorescent measurement)
Battery performance	Alkaline manganese: approx. 1000 measurements
Measurement/ illumination area	MAV: ø8mm/ø11mm SAV: ø3mm/6mm (Selectable between MAV and SAV)
Repeatability	Spectral Reflectance: Standard deviation within 0.1% (360 to 380nm within 0.2%) Colorimetric Value: Standard deviation within ΔE^*ab 0.04 (Measurement conditions: White calibration plate measured 30 times at 10-second intervals after white calibration was performed)
Inter instrument agreement	within ΔE^*ab 0.2 (MAV/SCI) based on 12BCRA Series II color tiles compared to values measured with master body.
UV adjustment	Instantaneous numerical adjustment (no mechanical adjustment required) With UV400nm cut filter
Measurement mode	Single measurement/automatic averaging of multiple measurements (auto mode: 3, 5, 8 times/manual mode)
Interface	RS-232C standard
Observer	2/10 degrees (CIE 1931/2°, CIE 1964/10°)
Illuminant	A, C, D50, D65, F2, F6, F7, F8, F10, F11, F12 (simultaneous evaluation is possible using two light sources)
Display data	Spectral value/graph, colorimetric value, color difference value/graph, PASS/FAIL result
Color space/ colorimetric data	L*a*b*, L*C*h, CMC (1:1), CMC (2:1), CIE94, Hunter Lab, Yxy, Munsell, XYZ, MI, WI (ASTM E313), YI (ASTM E313/ASTM D1925), ISO Brightness (ISO 2470), Density status A/T, L99C99h99, L99a99b99, WI/Tint (CIE/Ganz&Grissler)
Data memory	700 (SCI/SCE as a set)
Tolerance judgment	Tolerance for color difference (both box and elliptical tolerances can be set)
Power source	4 AA-size battery or AC adapter
Size (WxHxD)	69 x 96 x 193mm
Weight	Approx. 670g (without batteries)
Operating temperature/ humidity range	5 to 40°C, relative humidity 80% or less with no condensation
Storage temperature/ humidity range	0 to 45°C, relative humidity 80% or less with no condensation
Standard accessories	White calibration plate, Target mask ø8mm, Target mask ø3mm, RS-232C cable, AC adapter, AA-size battery (x4)
Optional Accessories	Hard case, Dust cover set, Dust cover, SpectraMagic (software), Zero calibration box



* The specifications and drawings given here are subject to change without prior notice.

Color control network by spectrophotometer

High inter-instrument agreement between the portable CM-2600d spectrophotometer and the desk top CM-3000 series make it easy to build a total color control network.



SAFETY PRECAUTIONS

To ensure correct use of the instrument, please adhere to the following.



- Before using the instrument, be sure to read the instruction manual.
- Always use the specified power. Use of inappropriate power may result in fire or electric shock.



The manufacturing center of Konica Minolta Sensing Inc. (Location: Aichi Pref., Japan) was approved by the British certification organization Lloyd's Register Quality Assurance for certification under the ISO 9001: 1994 international quality management system standards on March 3, 1995. Since its establishment in 1990, the center has carried out the development and production of precision instruments and associated application software for the measurement of color, light, and shape. Certification was awarded to the center's quality management system, including design, manufacturer, management of manufacture, calibration and servicing. Certification was carried over to the ISO 9001: 2000 standards in February, 2003.

KONICA MINOLTA SENSING, INC.

Minolta Corporation / ISD
Minolta Canada Inc.
Minolta Europe GmbH
Minolta France S.A.
Minolta UK Limited
Minolta Austria Ges.m.b.H.
Minolta Camera Benelux B.V.
Minolta Schweiz AG
Minolta Italia s. r. l
Minolta Svenska AB
Minolta Hong Kong Limited
Shanghai Office
Minolta Singapore (Pte) Ltd.
KONICA MINOLTA SENSING, INC. Seoul Office

3-91, Daisennishimachi, Sakai.Osaka 590-8551, Japan

101 Williams Drive, Ramsey, New Jersey 07446, U.S.A. Phone: 1-888-ISD-COLOR (in USA), 201-529-6060 (outside) FAX: 201-529-6070
 369 Britannia Road East Mississauga, Ontario L4Z 2H5, Canada Phone: 905-890-6600 FAX: 905-890-7199
 Minoltaring 11, 30855 Langenhagen, Germany Phone: 0511-74040 FAX: 0511-741050
 365-367, Route de Saint-Germain, 78424 Carrières-Sur-Seine, France Phone: 01-30866161 FAX: 01-30866280
 Precedent Drive, Rooksley Park, Milton Keynes, MK13 8HF, England Phone: 01-908200400 FAX: 01-908618662
 Amalienstrasse 59-61, 1131 Wien, Austria Phone: 01-87882-222 FAX: 01-87882-180
 Postbus 6000 3600 HA Maarsse, The Netherlands Phone: 00(31)-30-2470860 FAX: 00(31)-30-2470861
 Riedstrasse 6, 8953 Dietikon, Switzerland Phone: 01-7403727 FAX: 01-7422350
 Via Stephenson 37, 20157, Milano, Italy Phone: 02-39011-1 FAX: 02-39011-219
 Albygatan 114 P.O.Box 9058 S-17109 Solna, Sweden Phone: 08-627-7650 FAX: 08-627-7685
 Room 208, 2/F, Eastern Centre 1065 King's Road, Quarry Bay, Hong Kong, China Phone: 2565-8181 FAX: 2565-5601
 Rm. 1211, Ruijin Building No. 205 Maoming Road (S) Shanghai 20020, China Phone: 021-64720496 FAX: 021-64720214
 10, Teban Gardens Crescent Singapore 608923 Phone: 6563-5533 FAX: 6561-9879
 801, Chung-Jin Bldg., 475-22, BangBae-Dong, Seocho-ku, Seoul, Korea Phone: 02-523-9726 FAX: 02-523-9729



KONICA MINOLTA

SPECTROPHOTOMETER CM-2500d

High performance, low cost
portable spectrophotometer.

ISO 9001
CERTIFIED
ISO 14001

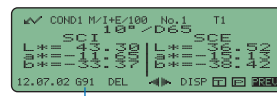
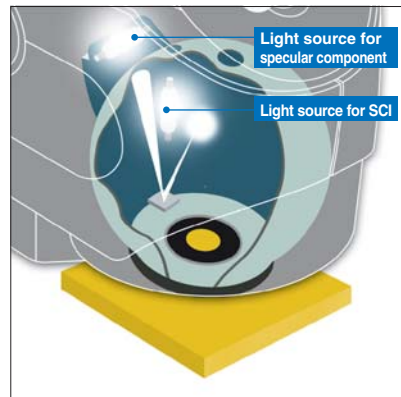


The essentials of imaging

Designed for versatility in various applications, the CM-2500d is a portable integrating sphere spectrophotometer incorporating Numerical Gloss Control.

Simultaneous measurement of SCI (specular component included) and SCE (specular component excluded). Advanced Numerical Gloss Control.

Simultaneous measurement of SCI and SCE displays the data on the LCD in only 1.5 seconds. Unlike conventional spectrophotometers, there is no need to mechanically switch between SCI and SCE mode. This improves working efficiency and provides stable measured data since the measurement area does not shift when the mode is switched. And also Relativity Gloss Value can be displayed by using Numerical Gloss Control.



The LCD specifications are subject to change without prior notice.

• SCI is a method in which measurements are taken with the specular reflection included. For this reason, it minimizes influences of the surface condition of a sample, and is especially suitable for color quality control and Computer Color Matching.

• SCE is a method in which measurements are taken excluding the specular reflection. This type of measurement provides results similar to those observed visually.



For plastics, paints, resins and consumer products

High reliability and long life. Maintenance-free design.

The number of moving parts in the instrument is minimized through the introduction of numerical control technology. The CM-2500d can be used with confidence, since it has been developed, manufactured and calibrated to meet ISO 9001 requirements.

Allows measurement in any position. Compact, lightweight, with an easy-to-operate navigation wheel and large LCD display.

The battery-powered small, light body allows the instrument to be placed in any position at the sample surface. The CM-2500d's large LCD display and its reverse display function provide easy reading, irrespective of which hand it is held in. Using your finger, the navigation wheel allows simple, user friendly operation.

(Turn) (Push)

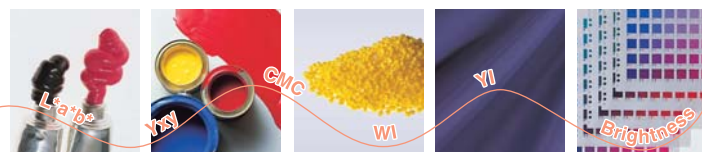


For paints, plastics, automobiles, ceramics, architectural interiors, textile, paper, food etc.

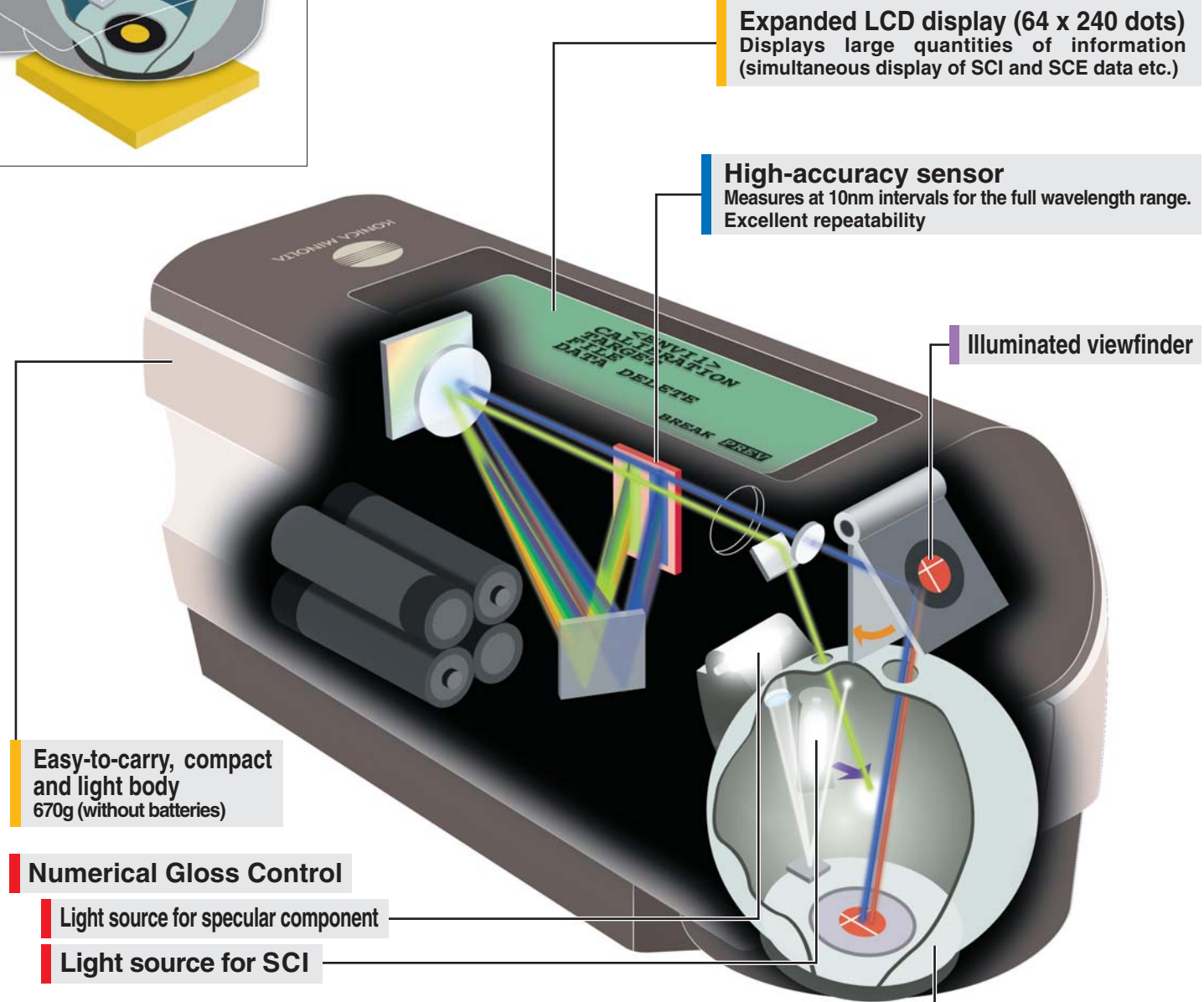
Promotes accurate, consistent color communication. Conforms to widely-accepted industry standards and allows measurements in all popular color spaces.

The optics use an integrating sphere to provide diffuse illumination/8-degree viewing system.

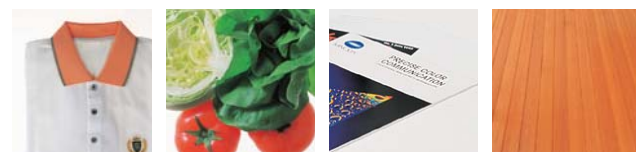
The CM-2500d conforms to all widely accepted standards including ISO, JIS, DIN, CIE and ASTM, and generates measurements in color spaces such as L*a*b*, Yxy, Munsell and CMC.



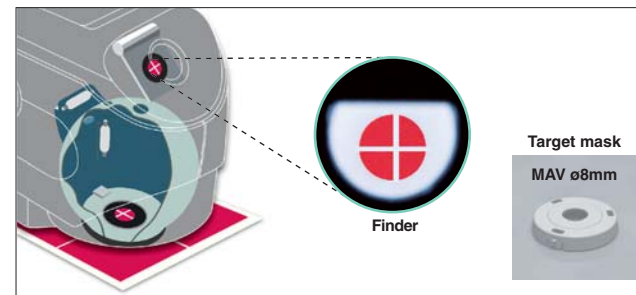
In various applications



The user can choose the most suitable measurement area for the target. The easy-to-carry body with the illuminated viewfinder enables the user to position the instrument on the target quickly and accurately.



For pharmaceuticals, cosmetics, printing, building materials, textiles, food etc.



Powerful partnership between CM-2500d and SpectraMagic

Color Quality Control Software

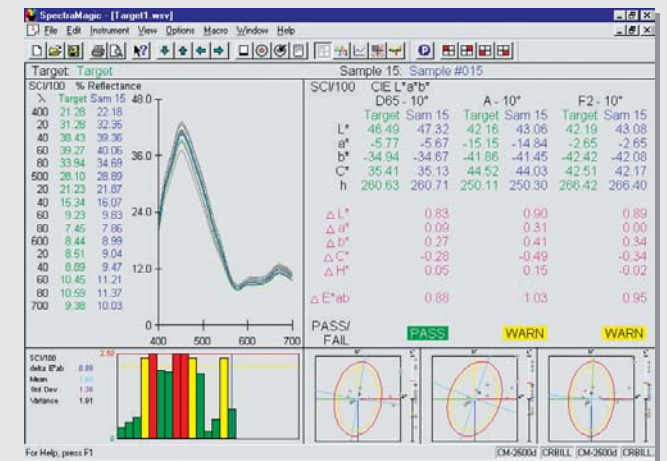
SpectraMagic (Optional)

Supports Windows®98/2000, Windows NT®4.0

Consistent color communication. Since automatic setting of color difference tolerances is possible, accurate Pass/Fail information can be given to customers and manufacturers.

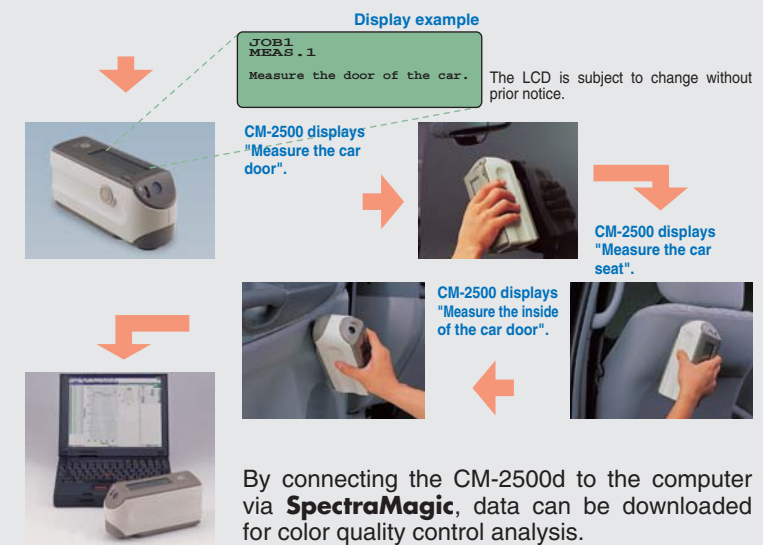
Enables color analysis from various viewpoints. Detailed, easy-to-see spectral graph.

Exports data to spreadsheet applications.



Procedures are displayed in the form of messages to eliminate in-process errors. Task function by CM-2500d and SpectraMagic.

Measurement procedure can be downloaded to the CM-2500d from **SpectraMagic**. Since standard color difference for each part can be entered, human setting errors can be prevented.

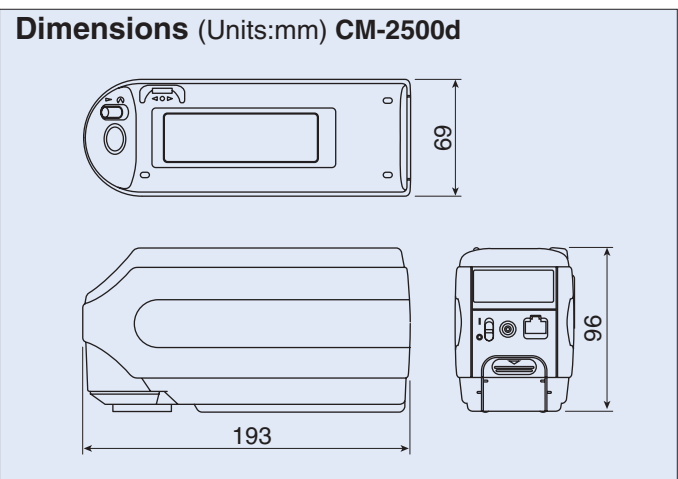
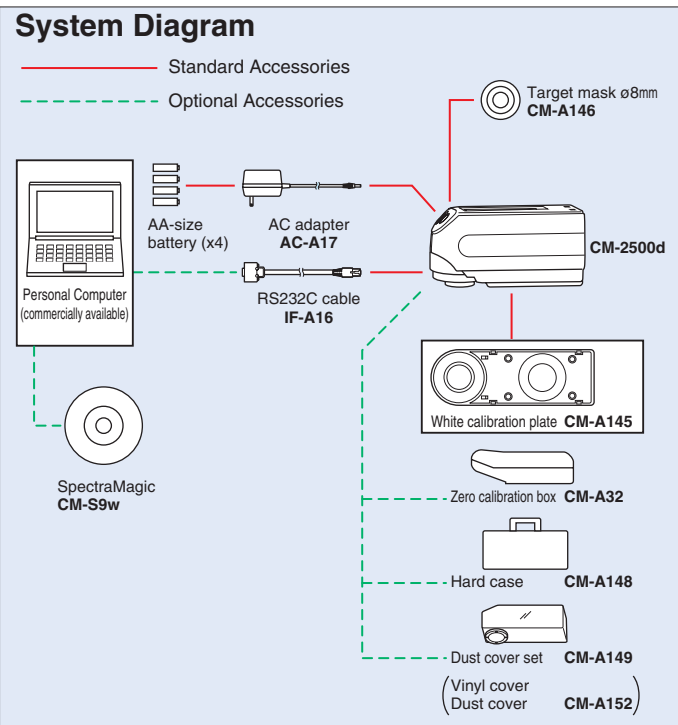


<Main Specifications>

Color space / Color difference scales	L*a*b*, L*c*h, L*u*v*, Hunter Lab, FMC-2, CMC, CIE-94, XYZ, Yxy
Color indices	Metamerism, Whiteness/Whiteness Difference, Yellowness/Yellowness Difference, Tint/Tint Difference, Brightness, opacity, Haze, Dominant Wavelength, Excitation Purity, Ganz WI, Ganz Tint
Observer Conditions	2°, 10°
Illuminant Conditions	A, C, D65, D50, D55, D75, F2, F6, F7, F8, F10, F11, F12, U50
Displays	Spectral plot, Color plot, Tolerance plot, Statistical report, Real color, K/S, Multi-view display
Tolerance Settings	Elliptical, Box, Pass / Warn / Fail

Microsoft®, Windows®, Windows®2000, Windows®98, Windows NT® are trademarks of Microsoft Corporation in the USA.

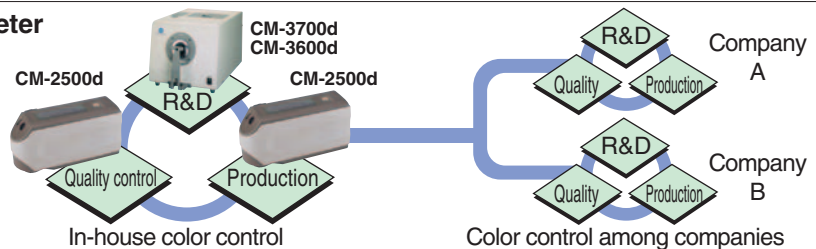
Specifications	
Illumination/viewing system	d/8 (diffuse illumination, 8-degree viewing), equipped with simultaneous measurement of SCI (specular component included)/SCE (specular component excluded) Conforms to CIE No.15, ISO 7724/1, ASTM E1164, DIN 5033 Teil7 and JIS Z8722 Condition C standard.
Sphere Size	ø52mm
Light-receiving element	Silicon photodiode array (dual 40 elements)
Spectral separation device	Diffraction grating
Wavelength range	360nm to 740nm
Wavelength pitch	10nm
Half bandwidth	Approx. 10nm
Reflectance range	0 to 175%, resolution: 0.01%
Light source	2 pulsed xenon lamps
Measurement time	Approx. 1.5 seconds (approx. 2 seconds for fluorescent measurement)
Minimum interval between measurements	3 seconds for SCI/SCE (4 seconds for fluorescent measurement)
Battery performance	Alkaline manganese: approx. 1000 measurements
Measurement/illumination area	MAV: ø8mm/ø11mm
Repeatability	Spectral Reflectance: Standard deviation within 0.1% (360 to 380nm within 0.2%) Colorimetric Value: Standard deviation within ΔE*ab 0.04 (Measurement conditions: White calibration plate measured 30 times at 10-second intervals after white calibration was performed)
Inter instrument agreement	within ΔE*ab 0.2 (MAV/SCI) based on 12BCRA Series II color tiles compared to values measured with master body.
Measurement mode	Single measurement/automatic averaging of multiple measurements (auto mode: 3, 5, 8 times/manual mode)
Interface	RS-232C standard
Observer	2/10 degrees (CIE 1931/2°, CIE 1964/10°)
Illuminant	A, C, D50, D65, F2, F6, F7, F8, F10, F11, F12 (simultaneous evaluation is possible using two light sources)
Display data	Spectral value/graph, colorimetric value, color difference value/graph, PASS/FAIL result
Color space/colorimetric data	L*a*b*, L*C*h, CMC (1:1), CMC (2:1), CIE94, Hunter Lab, Yxy, Munsell, XYZ, MI, WI (ASTM E313/CIE), Wt/Tint (CIE/Ganz & Griesser), YI (ASTM E313/ASTM D1925), ISO Brightness (ISO 2470), Density status A/T, L ₉₉ a ₉₉ b ₉₉ , L ₉₉ C ₉₉ h ₉₉
Data memory	700 (SCI/SCE as a set)
Tolerance Display	Tolerance for color difference (both box and elliptical tolerances can be set)
Power source	4 AA-size battery or AC adapter
Size (WxHxD)	69 x 96 x 193mm
Weight	Approx. 670g (without batteries)
Operating temperature/humidity range	5 to 40°C, relative humidity 80% or less with no condensation
Storage temperature/humidity range	0 to 45°C, relative humidity 80% or less with no condensation
Standard accessories	White calibration plate, Target mask ø8mm, RS-232C cable, AC adapter, AA-size battery (x4)
Optional Accessories	Hard case, Dust cover set, Dust cover, SpectraMagic (software), Zero calibration box



* The specifications and drawings given here are subject to change without prior notice.

Color control network by spectrophotometer

High inter-instrument agreement between the portable CM-2500d spectrophotometer and the desktop CM-3000 series make it easy to build a total color control network.



SAFETY PRECAUTIONS

To ensure correct use of the instrument, please adhere to the following.



- Before using the instrument, be sure to read the instruction manual.
- Always use the specified power. Use of inappropriate power may result in fire or electric shock.



The manufacturing center of Konica Minolta Sensing Inc. (Location: Aichi Pref., Japan) was approved by the British certification organization Lloyd's Register Quality Assurance for certification under the ISO 9001: 1994 international quality management system standards on March 3, 1995. Since its establishment in 1990, the center has carried out the development and production of precision instruments and associated application software for the measurement of color, light, and shape. Certification was awarded to the center's quality management system, including design, manufacturer, management of manufacture, calibration and servicing. Certification was carried over to the ISO 9001: 2000 standards in February, 2003.

KONICA MINOLTA SENSING, INC.

Minolta Corporation / ISD
 Minolta Canada Inc.
 Minolta Europe GmbH
 Minolta France S.A.
 Minolta UK Limited
 Minolta Austria Ges.m.b.H.
 Minolta Camera Benelux B.V.
 Minolta Schweiz AG
 Minolta Italia s. r. l
 Minolta Svenska AB
 Minolta Hong Kong Limited
 Shanghai Office
 Minolta Singapore (Pte) Ltd.
 KONICA MINOLTA SENSING, INC. Seoul Office

3-91, Daisennishimachi, Sakai.Osaka 590-8551, Japan

101 Williams Drive, Ramsey, New Jersey 07446, U.S.A. Phone: 1-888-ISD-COLOR (in USA), 201-529-6060 (outside) FAX: 201-529-6070
 369 Britannia Road East Mississauga, Ontario L4Z 2H5, Canada Phone: 905-890-6600 FAX: 905-890-7199
 Minoltaring 11, 30855 Langenhagen, Germany Phone: 0511-74040 FAX: 0511-741050
 365-367, Route de Saint-Germain, 78424 Carrières-Sur-Seine, France Phone: 01-30866161 FAX: 01-30866280
 Precedent Drive, Rooksley Park, Milton Keynes, MK13 8HF, England Phone: 01-908200400 FAX: 01-908618662
 Amalienstrasse 59-61, 1131 Wien, Austria Phone: 01-87882-222 FAX: 01-87882-180
 Postbus 6000 3600 HA Maarsse, The Netherlands Phone: 00(31)-30-2470860 FAX: 00(31)-30-2470861
 Riedstrasse 6, 8953 Dietikon, Switzerland Phone: 01-7403727 FAX: 01-7422350
 Via Stephenson 37, 20157, Milano, Italy Phone: 02-39011-1 FAX: 02-39011-219
 Albygatan 114 P.O.Box 9058 S-17109 Solna, Sweden Phone: 08-627-7650 FAX: 08-627-7685
 Room 208, 2/F, Eastern Centre 1065 King's Road, Quarry Bay, Hong Kong, China Phone: 2565-8181 FAX: 2565-5601
 Rm. 1211, Ruijin Building No. 205 Maoming Road (S) Shanghai 20020, China Phone: 021-64720496 FAX: 021-64720214
 10, Teban Gardens Crescent Singapore 608923 Phone: 6563-5533 FAX: 6561-9879
 801, Chung-Jin Bldg., 475-22, BangBae-Dong, Seocho-ku, Seoul, Korea Phone: 02-523-9726 FAX: 02-523-9729