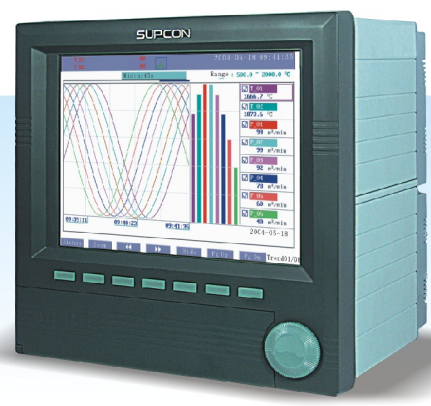


R5000 Paperless Recorder

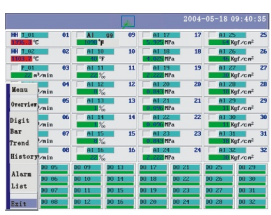


Description

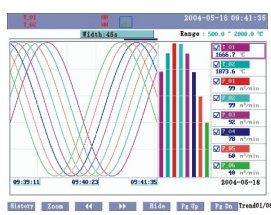
The R5000 paperless recorder offers various displays on a 10.4" color LCD and data storage to NAND FLASH. The R5000 has up to 32 universal analog inputs for direct current and voltage signals, thermocouples and RTD. Sensor type and measurement range are freely configured. Up to 32 relays are provided for alarm output.

The R5000 paperless recorder is complied to IEC61010-1:2001, The degree of front panel comes up to IP54.

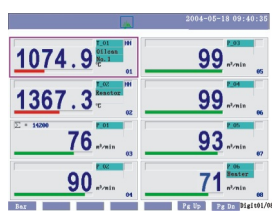
Key Displays



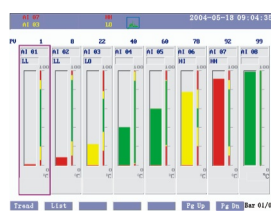
Overview



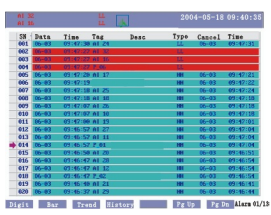
History Display



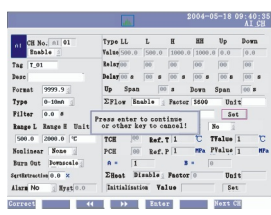
Digital Display



Bar Graph Display



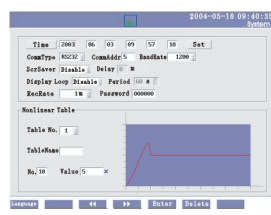
Alarm Log



Channel Configuration



Totalizer Display



System Configuration

Characteristics

- 10.4" TFT Color LCD
- 128 MB NAND FLASH
- Shortcut Knob
- 3 Color Schemes
- Auto Switch for Display
- Screen Saver

Main Features

- 32 Analog Inputs
- 8 Analog Outputs
- Display Layout
- 32 Alarm Outputs
- Flow Model
- Settings Backup
- Data Recording
- Square Root Extraction
- RS-232C/RS-485 Communication
- Burn Out
- Alarm Logs
- CF Card
- Non-linear Tables
- Totalizer Logs

Main Specification

Channel	Up to 32 AI channels,universal signal input
Input Signal	Direct Voltage:0~5V,1~5V,0~20mV, 0~100mV, -10~10V, 0~10V, -5~5V, 0~1V, 0.2~1V
	Direct Current:0~10mA,4~20mA,
	Thermocouple:B,E,J,K,S,T,R,N,Wre5-26,Wre3-25
	RTD:Pt100,JPt100,Cu50
Power Supply	100~240VAC, 47~63Hz
Power Consumption	30VA Max.
Transmitter Power Supply	100mA,24VDC
Communication Interface	RS-485 or RS-232C
Sampling Period	1s
Recording Period	1/2/4/5/6/8/10/12/15/24/30/36/48s, 1/2/4/5/10/30m, 1/2/4h
Alarm Output	32 output relays, 250VAC, 3A (resistive load)
Display	10.4 " TFT Color LCD
Weight	Approximately 9kg
Dimension	Bezel Size: 288mm×288mm×244 mm;Panel Cut Out: 282 [±] mm×282 [±] mm
Ambient Conditions	Operate Temperature:0~50°C;Relative Humidity:10~85% RH(non-condensing).
	Transportation and Storage Temperature:-20~ 60°C;Relative Humidity:5~ 95%RH(non-condensing).

Applications

- Metallurgy
- Pulp & Paper
- Petroleum
- Food Industry
- Chemical
- Pharmacy
- Building Materials
- Heat Treatment And Water Treatment

Ordering Code

R50	R5000 Papeless Recorder	
Code	Analog Input	
10	10-channel	
12	12-channel	
16	16-channel	
32	32-channel	
Code	Communication	
C0	None	
C2	RS-232C	
C4	RS-485	
Code	Alarm Output	
R00	None	
R02	2-channel	
R04	4-channel	
R08	8-channel	
R12	12-channel	
R16	16-channel	
R24	24-channel	
R32	32-channel	
Code	Transmitter Power Supply	
PW0	None	
PW1	30mA, 24VDC	
PW2	60mA, 24VDC	
PW3	100mA, 24VDC	
Code	Memory Capacity	
M0	32MB	
M2	64MB	
M4	128MB	
Code	CF Card Interface	
S0	N	
SC	Y	
Code	Operation Function	
F0	None	
F1	Flow Model	
F2	Mass Flow Compensation	
Code	Analog Output	
L0	None	
L1	1-channel	
L2	2-channel	
L3	3-channel	
L4	4-channel	
L5	5-channel	
L6	6-channel	
L7	7-channel	
L8	8-channel	
Code	Power Supply	
/VAC	(100~240)VAC	
Code	Language	
/E	English	
/C	Chinese	
R50 - □□ - C□ - R□□ - PW□ - M□ - S□ - F□ - /L□ - /VAC - /□		

Note:

- ① If the amount of analog output is more than 4, it is restricted that the amount of alarm outputs should not surpass 16, as well as analog inputs.
- ② Optional accessories: CF Card